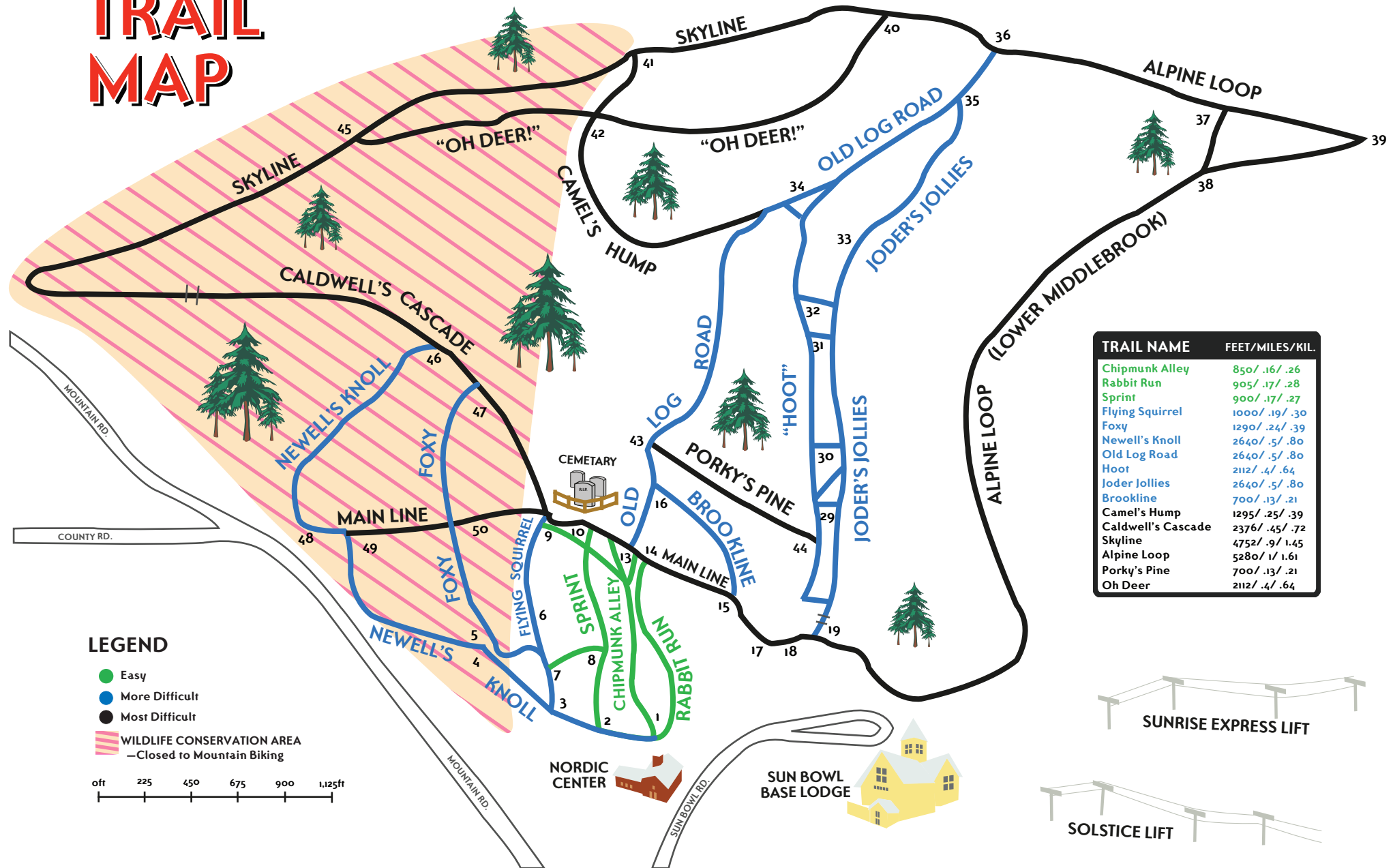


NORDIC TRAIL MAP



TRAIL NAME	FEET/MILES/KIL.
Chipmunk Alley	850 / .16 / .26
Rabbit Run	905 / .17 / .28
Sprint	900 / .17 / .27
Flying Squirrel	1000 / .19 / .30
Foxy	1290 / .24 / .39
Newell's Knoll	2640 / .5 / .80
Old Log Road	2640 / .5 / .80
Hoot	2112 / .4 / .64
Joder Jollies	2640 / .5 / .80
Brookline	700 / .13 / .21
Camel's Hump	1295 / .25 / .39
Caldwell's Cascade	2376 / .45 / .72
Skyline	4752 / .9 / 1.45
Alpine Loop	5280 / 1 / 1.61
Porky's Pine	700 / .13 / .21
Oh Deer	2112 / .4 / .64

LEGEND

- Easy
 - More Difficult
 - Most Difficult
 - WILDLIFE CONSERVATION AREA
—Closed to Mountain Biking
- 0ft 225 450 675 900 1,125ft



NORDIC CENTER

SUN BOWL BASE LODGE